



Bedford Arts and Crafts Society Newsletter November 2023

Dear BACS friends,

Hoping you are having an enjoyable fall so far, and sending best wishes for Thanksgiving.

Sylvia



Preview: January BACS Demo: White Line Woodcuts with Kate Hanlon

It may feel like a long way off, but the next BACS program will be here before you know it. Be sure to highlight January 16 on your 2024 calendar and save the date. **Kate Hanlon** will give us an overview of printmaking approaches and will present a demo on white line woodcut techniques. Rather than creating separate woodblocks for each color, white line printers make and paint one block only. Small grooves between the elements of the design create the white line. Kate is an experienced teacher and multifaceted artist, and her demo is sure to spark your post-holiday brain back to life! Sign-up details will be available in the December newsletter. This presentation will take place via Zoom.



Kate Hanlon, *Roof Shovelers*, white line woodcut



BACS Holiday Luncheon, December 9, 12:00-2:00

Here's the promised update on the annual BACS holiday luncheon and gift swap on Saturday, December 9. The location will be the Upper Fellowship Hall in the First Church of Christ, Congregational, 25 Great Road, Bedford. Plan to arrive at 11:45 a.m. to get settled and socialize.

If you'd like to help plan and/or carry out the festivities, please contact social chair **Eileen Larsen** at egavinlarsen@gmail.com. Help is needed in several areas, and many hands will make light work! Setup will be from

11:00 a.m. to noon, and the cleanup crew will descend on the kitchen from 2:00 to 3:00 p.m. Watch for an invitation (with RSVP instructions) in your mail in mid-November!

Wednesday Crafting, 2:00-4:00 p.m. Weekly

Here's the Wednesday crafting schedule for November:

- 11/8: Painted suncatchers with **Sandi Rosenfeld**
- 11/15: Button flowers with **Marita Hartshorn**
- 11/22: No crafting; Happy Thanksgiving!
- 11/29: Bring your own project

Watch for updates in **Gail Terrell's** weekly e-mail blasts. Remember to reserve your place at crafts@bacsm.org for every crafting session you plan to attend. Thank you.

Bedford Cultural District News

Holiday Artisans Market, December 2, 2:00–6:00 p.m.

The Bedford Cultural District Partnership, along with First Parish Church, is cosponsoring a Holiday Artisans Market on Saturday, December 2, 2:00-6:00 p.m., at First Parish, 75 Great Road.

BACS will be selling jewelry, craft items, mini-paintings, and more. **Sylvia Mallory** will be reaching out for BACS volunteers to take a one-hour shift at our tables. Please contact her at slmal@hotmail.com if you can lend a hand.

As shoppers browse the tables, live seasonal music will fill the air, and a Children's Fair will take place downstairs. These events are part of a wider town Holiday Kickoff being celebrated that day.



Watch for updated information at <https://www.bedfordma.gov/437/Bedford-Cultural-District>

Mini-Art Galleries

The Bedford Cultural District Partnership has also sponsored the installation of two mini-art galleries, respectively in front of the Town Center building and near Bedford High. For the Town Center location, the idea is for visitors to “Take one, leave one”—that is, bring a small, original piece of art or craftwork that’s longing for a new home and take a piece currently on display. Take part in this fun new project by sharing some of your small work in the Town Center gallery! The second mini-art gallery, near Bedford High, features rotating exhibits by BHS students. These pieces will be for display only—not to take. But do stop by to check out the kids’ varied talents!

Polymer Clay Workshop with Bedford Recreation

It’s not too late to sign up for **Eileen Larsen’s** polymer clay workshop, cosponsored by the Bedford Recreation Department and BACS. Hurry, because just three spaces remain! “Polymer Clay: The Basics” will meet on two Thursdays, November 9 and 16, 9:30–12:30. Sign up at https://anc.apm.activecommunities.com/bedfordma/home?onlineSiteId=0&from_original_cui=true or by calling (781) 275-1392 Monday through Friday during business hours.

Other Opportunities

Bedford Garden Club Workshop: Make a Holiday Swag



Michele Shuckel from Natural Selections Gardens will give a talk for the Bedford Garden Club on wreaths and their history and will teach participants techniques of wreath and swag making. Participants will go home with a harvest-themed swag for November decorating. BACS members are cordially invited to attend.

Michele will bring demo materials and fall-themed dried and preserved floral material and adornments, plus accent evergreens, paddle wire, and ribbon. Participants should bring:

- Clippers
- Gloves (optional)
- 3-4 large evergreen pieces (12-16 inches long) in a brown paper grocery bag (the latter will be helpful for cleanup)

The workshop will be held on Tuesday, November 14, at the First Church of Christ, Congregational, 25 Great Road. Arrive at 9:30 a.m. for coffee and conversation; the presentation and workshop will begin at 10:00. Preregistration is required. The per-person materials cost is \$20.



If you are interested in attending, e-mail Lisa DiSanzo at l.disanzo@yahoo.com by **November 9 to hold your place.** At the same time, please send a check for the materials cost of \$20, no later than November 9, made out to the Bedford Garden Club. Mail to: Lisa DiSanzo, 3 Cedar Ridge Drive, Bedford, MA 01730. This workshop looks like a great opportunity to bring some autumn beauty into your home!

Lexington's ArtWalk 2023 continuing through November 27

Stroll through Lexington Center and take in over 50 different artists' work at this year's ArtWalk. A diverse collection of works is displayed in retailers' windows during this popular annual event sponsored by the Munroe Center for the Arts. You can find more information at <https://www.facebook.com/LexArtWalk/>



Concord Art's Holiday Sale, November 30–December 17



Concord Art is sponsoring an onsite holiday art sale beginning November 30 and running through December 17. Members can bring in their work from November 14 through 16, 10:00 a.m.–4:00 p.m. A reception will be held on November 30 at 5:30 p.m. Concord Center for the Visual Arts, 37 Lexington Rd., Concord; https://concordart.org/wp-content/uploads/2023/09/Prospectus_Holiday-Art-Sale-2023.pdf

Marty Lehman, *Waiting for Santa* (2023), watercolor

Holiday Events at the Brush Art Gallery and Studios, December 1 and 9–10

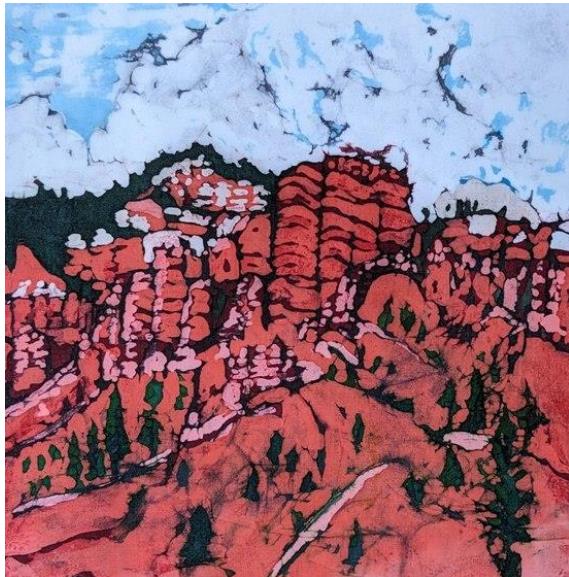
Lowell's Brush Art Gallery is sponsoring two Holiday Marketplace events in December: December 1: **Soup & Shop**; December 9 and 10: **Sugar & Spice Weekend**. Additional info at Brush Art Gallery and Studios, 256 Market Street, Lowell; <https://thebrush.org/>



BACS Members' Art and Crafts on Exhibit

Jewelry by **Lisa Himelman** will be offered for sale at the Holiday Artisans Market on December 2 cosponsored by the Bedford Cultural District and First Parish Church (see p. 2 of this newsletter). She will also be selling her work at the Boston Women's Holiday Market on Friday, December 8 (12:00–6:00 p.m.) and Saturday, December 9 and Sunday, December 10 (11:00 a.m. –5:00 p.m.). The location for the latter is inside the West Wing of Quincy Market Building (4 S Market St, Boston). Contact Lisa for details: lisa.himelman@gmail.com

Batiks by **Laura Wallace** will be featured in Gallery Twist's annual holiday show and sale, "Illumination." The exhibit will be open for viewing on December 1–31. A reception will be celebrated on Saturday, December 2, 5:00–7:00 p.m. Gallery Twist, 1963 Massachusetts Avenue, Lexington; <https://www.gallerytwist.com/upcoming-exhibition>



Bryce Canyon by Laura Wallace from the Gallery Twist show

Current & Upcoming Exhibits to See

"The Photographer's Eye" at the Bedford Public Library opening November 9 and continuing through January 10

The Bedford Free Public Library will host an exhibit of the work of 25 members of the Bedford Center for the Arts Photo Group. Entitled "The Photographer's Eye," the display showcases the range of photographic styles represented in the photo group. The show will open on Thursday, November 9, and close January 10 of the new year. A reception will be held at the library on Sunday, November 19, 5:00–6:00 p.m., during which the juror, **Gillian Ross**, will talk briefly about the exhibit. Bedford Free Public Library, Mudge Way, Bedford; details will be available at <https://www.bedfordlibrary.net/events/art-exhibits/>

“Home” at the Lexington Arts and Crafts Society through November 19

LexArt’s current exhibition, “Home,” focuses on the theme of home and the role of housing in our life. Whether a physical place or an idea, “home” can mean something different at each stage of life and varies by geography and culture. Nye Gallery, Lexington Arts and Crafts Society, 130 Waltham Street, Lexington; www.lexart.com

“It’s Pastel!” at the Discover Portsmouth Center (Portsmouth Historical Society) through November 18

The Portsmouth Historical Society is presenting a national exhibition of pastel painting, “It’s Pastel!,” through November 18. Some 65 works are on display at the Society’s beautiful gallery space and may also be viewed through a virtual link: <https://showsubmit.com/gallery/psnh-15th-annual-national-juried-exhibition>. Discover Portsmouth Center, 10 Middle Street, Portsmouth, New Hampshire; <https://www.pastelsocietynh.com/2023-it-s-pastel-info>



Jeff Ventola, *The Return*, from “It’s Pastel!”

When Fiber Speaks
Six Conversations
Nov 4-Dec 24, 2023

Belmont Gallery of Art
Homer Municipal Building
19 Moore St. 3rd Floor
Belmont, MA 02478
Gallery Hours:
Thursday 10-4
Friday 10-12
Sat/Sun 1-4

Reception:
November 5, 1-3 pm
Artist Talk:
December 10, 1- 4 pm

“When Fiber Speaks” at the Belmont Gallery of Art, November 4–December 24

The Belmont Gallery of Art is pleased to announce its new show, “When Fiber Speaks: Six Conversations.” Featuring the work of six artists, the show was expertly curated by world-renowned tapestry artist **Minna Rothman**. An artists’ reception on Sunday, November 5, 1:00 –3:00 p.m., is open to the public. Belmont Gallery of Art, 19 Moore Street, Belmont;

<https://www.belmontgallery.org/2023/10/when-fiber-speaks-six-conversations/>
<https://www.belmontgallery.org/2023/10/when-fiber-speaks-six-conversations/>

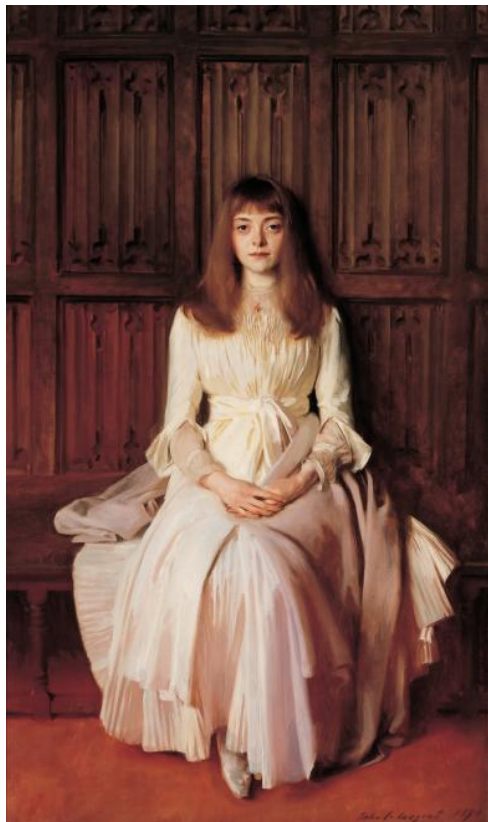
Emily Passman Art Exhibit “Fresh Paint” through December 30

Emily Passman is happy to announce the opening of “Fresh Paint,” an exhibit of many of her new pieces. The show opens on November 4 at the Munroe Center for the Arts Gallery and continues through December 30. A reception open to the public will take place on Friday, November 17, 5:00–8:00 p.m. Munroe Center for the Arts, 1403 Massachusetts Ave., Lexington; <https://www.munroecenter.org/in-the-gallery.html>

Emily Passman, Oakland, California, from the Munroe show



“Fashioned by Sargent” at the Museum of Fine Arts through January 15



“Fashioned by Sargent” explores John Singer Sargent’s complex relationship with his often-affluent clients and their clothes. The exhibition reveals Sargent’s power over his sitters’ images by considering the liberties he took with their attire to express distinctive personalities, social positions, professions, gender identities, and nationalities. Alongside about 50 paintings by Sargent, over a dozen period garments and accessories shed light on the relationship between fashion and this beloved artist’s creative practice. Museum of Fine Arts, 465 Huntington Ave, Boston; <https://www.mfa.org/exhibition/fashioned-by-sargent>

John Singer Sargent, *Elsie Palmer* (1889–1890), oil on canvas

“Strong Women in Renaissance Italy” at the Museum of Fine Arts through January 7

While at the MFA, also take in the wonderful show “Strong Women in Renaissance Italy,” continuing through January 7. Through more than 100 works from the 14th to the early 17th century, this exhibition explores the lives and experiences of women in Renaissance Italy and offers fresh perspectives on female creativity,

power, and agency. More information at <https://www.mfa.org/exhibition/strong-women-in-renaissance-italy>

Lorenzo Costa, *Portrait of a Woman with a Pearl Necklace* (c. 1485–95), oil on panel, from the MFA show



“Every Leaf & Twig: Andrew Wyeth’s Botanical Imagination” at the Farnsworth Art Museum through March 24, 2024



This new exhibit presents over twenty never-before-exhibited watercolors and sketches of plant life that the artist found on walks and wanders throughout midcoastal Maine, a landscape he knew well. Farnsworth Art Museum, 16 Museum St., Rockland, ME; <https://www.farnsworthmuseum.org/exhibition/every-leaf-and-twig-andrew-wyeths-botanical-imagination/>

Andrew Wyeth, *Star Flowers* (2004), watercolor on paper from the Farnsworth show

“Toward the New: A Journey into Abstraction” at the Currier Museum of Art, Opening November 16 and Continuing through March 31, 2024

The Currier Museum of Art will present this new exhibition looking at the long journey toward abstraction that encompasses its varied manifestations. Many of the Currier’s all-time favorites are included in the show, such as **Pablo Picasso’s** *Woman Seated in a Chair* (1941), Josef **Albers’s** *Homage to the Square: Early Rising I* (1961), **Alexander Calder’s** *Petit Disque Jaune* (1967), and **Joan Mitchell’s** *Cous-cous* (1961–1962). Currier Museum of Art, 150 Ash Street, Manchester, NH; <https://currier.org/exhibition/toward-the-new-a-journey-into-abstraction/>

Pablo Picasso, *Woman Seated in a Chair* (1941), oil on canvas



“Threads: Artists Weave Their Worlds” at the Bowdoin College Museum of Art through October 13, 2024

This new exhibit brings together work by contemporary artists who incorporate weaving, sewing, quilting, and fabric to explore ideas about gender, identity, memory, and cross-cultural encounters. Bowdoin College Museum of Art, 9400 College Station, Brunswick, ME; www.bowdoin.edu

Returning BACS Member

We’re pleased to welcome **Ruth Bragg** back to Bedford Arts and Crafts. Greetings, Ruth! She may be reached at ruth.g.bragg@gmail.com.

BACS Facebook Page

Do you know that BACS has a Facebook page? This handy resource provides a forum for showcasing members' work and highlighting opportunities of all kinds. Above all, the objective is to foster a sense of community as we encourage and support one another in our artistic and crafting projects. Grab a cup of coffee and check out our page (Bedford Arts and Crafts Society) here: <https://www.facebook.com/groups/5120028704785100>



BACS Website

Great progress has been made on the redesign and relaunch of the BACS website, www.bacsma.org. Kudos to **Paula Gilarde** for her inspired work on updating our look and content! If you haven’t yet done so, please contribute photo images of your art and/or your craftwork to the BACS Gallery on the site. It’s easy, and you get to showcase your work to the community. As well, the Gallery serves as a handy visual tool for showing potential members and interested others what we do creatively.

To see the gallery pages, go to <https://www.bacsma.org/members-gallery/>. When you are ready to submit your bio and one or more photos of your work, e-mail website@bacsma.org. Please indicate which photo you would like on your front page. You can e-mail the bio with photos as an attachment, and medium size for the photos would be best. Contact Paula at paula.gilarde@gmail.com with your questions.

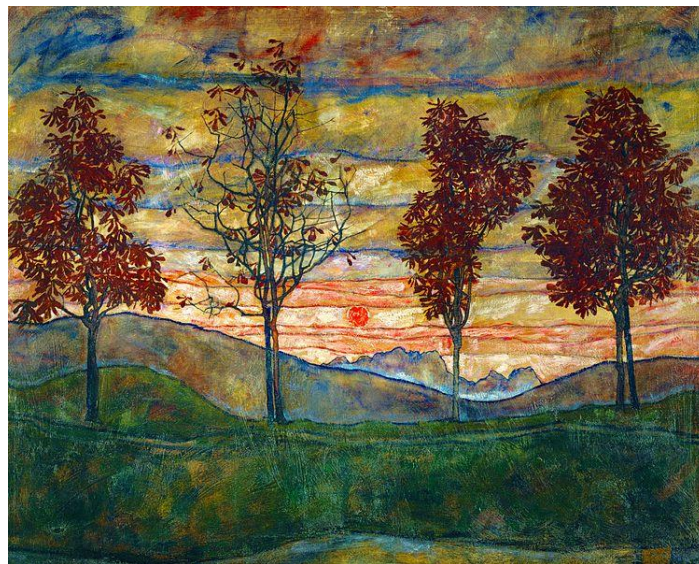
Artist Support Group

The artist support group is an informal meeting of BACS members. We show our artwork-in-progress, ask for suggestions, and share information about resources, materials, and opportunities. And sometimes we do art together in real time. The group's next meeting will take place on Wednesday, November 15, at the home of **Alyce McLaughlin**. For questions, e-mail **Judi Babcock** at judibabcock@gmail.com.



Thanksgiving: Heart of Autumn

Four Trees captures a peaceful autumn moment. Characterized by vibrant colors and an unusual perspective, it's one of the Austrian expressionist **Egon Schiele**'s most significant works. It portrays a woodland environment with four trees positioned near each other and far from the spectator. The foreground is painted with strong impasto to provide texture, while the backdrop is blurred to look like a distant scene viewed through a camera lens or a windowpane.



Egon Schiele, *Four Trees* (1917), oil on canvas

Happy Thanksgiving!

